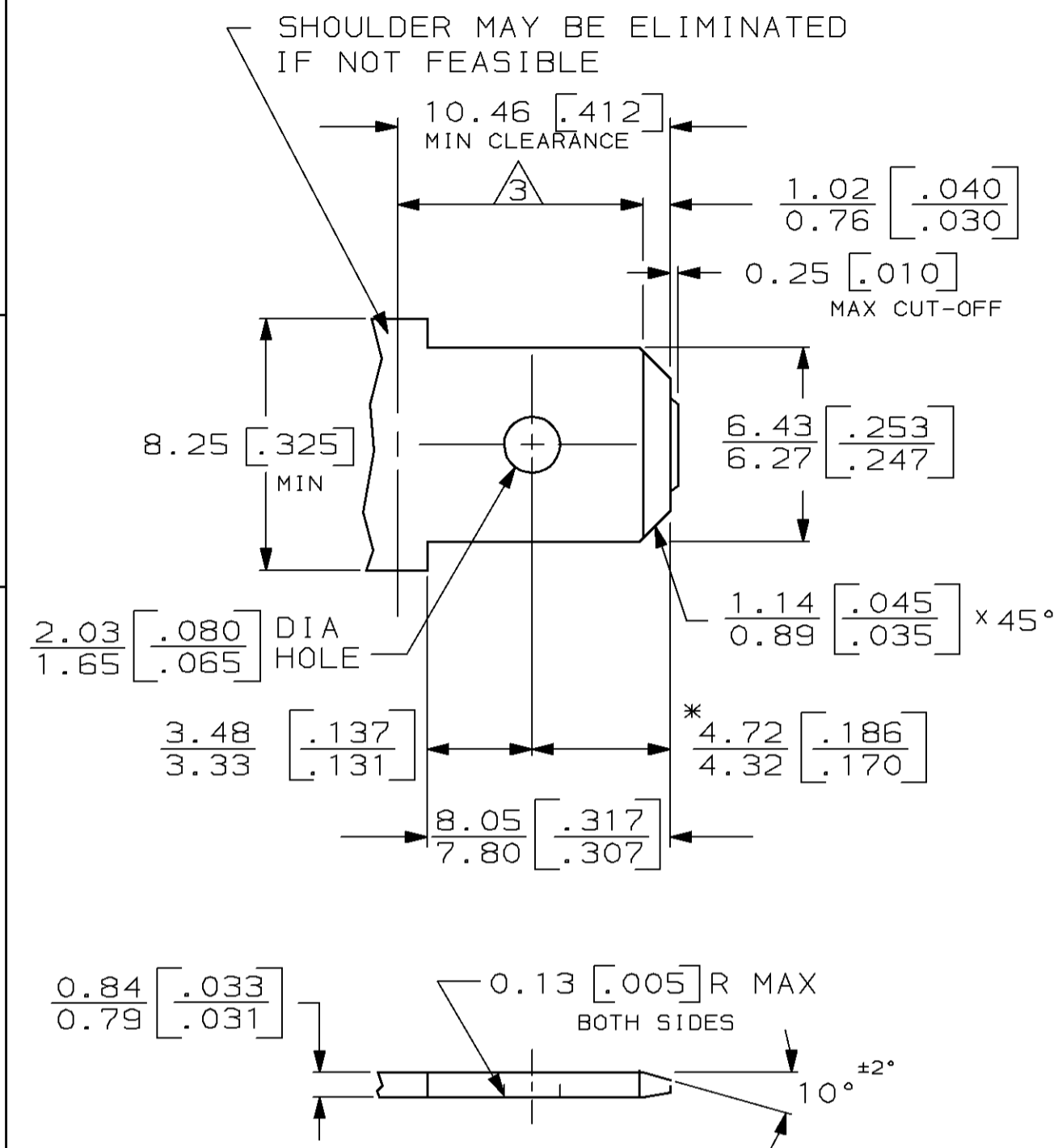


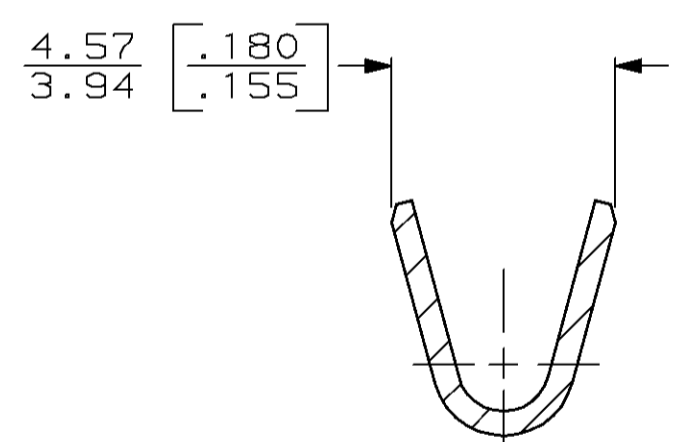
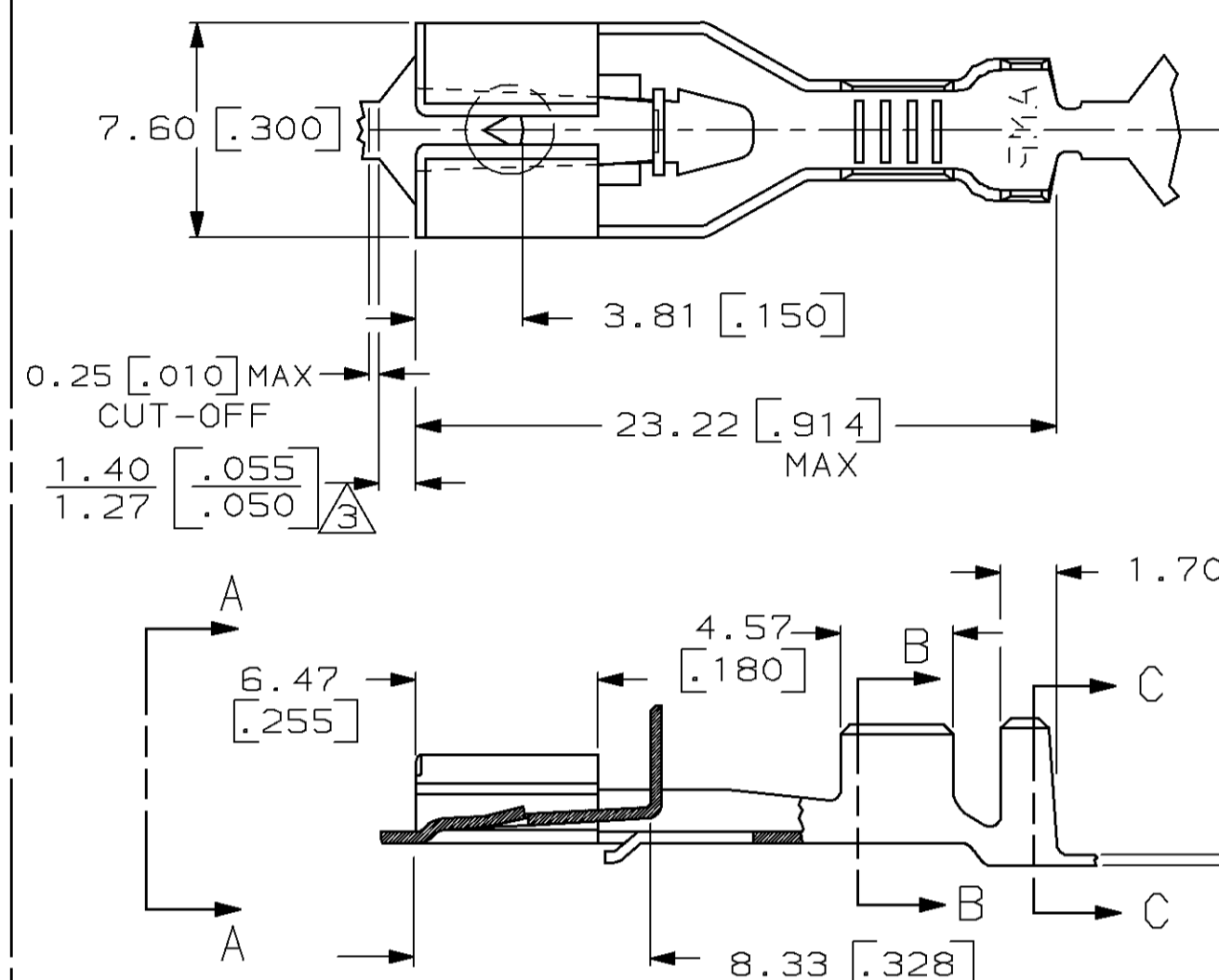
THIS DRAWING IS UNPUBLISHED. RELEASED FOR PUBLICATION, 19  
 © COPYRIGHT 19 BY AMP INCORPORATED, HARRISBURG, PA. ALL INTERNATIONAL RIGHTS RESERVED. AMP PRODUCTS MAY BE COVERED BY U.S. AND FOREIGN PATENTS AND/OR PATENTS PENDING.

LOC		DIST		P		F		REVISIONS		DATE	APPROVED
AF	50					ZONE	LTR	DESCRIPTION		JR	JG
							K	REV PER 0G1A-0252-98	8/24/98		

# SUGGESTED MATING TAB

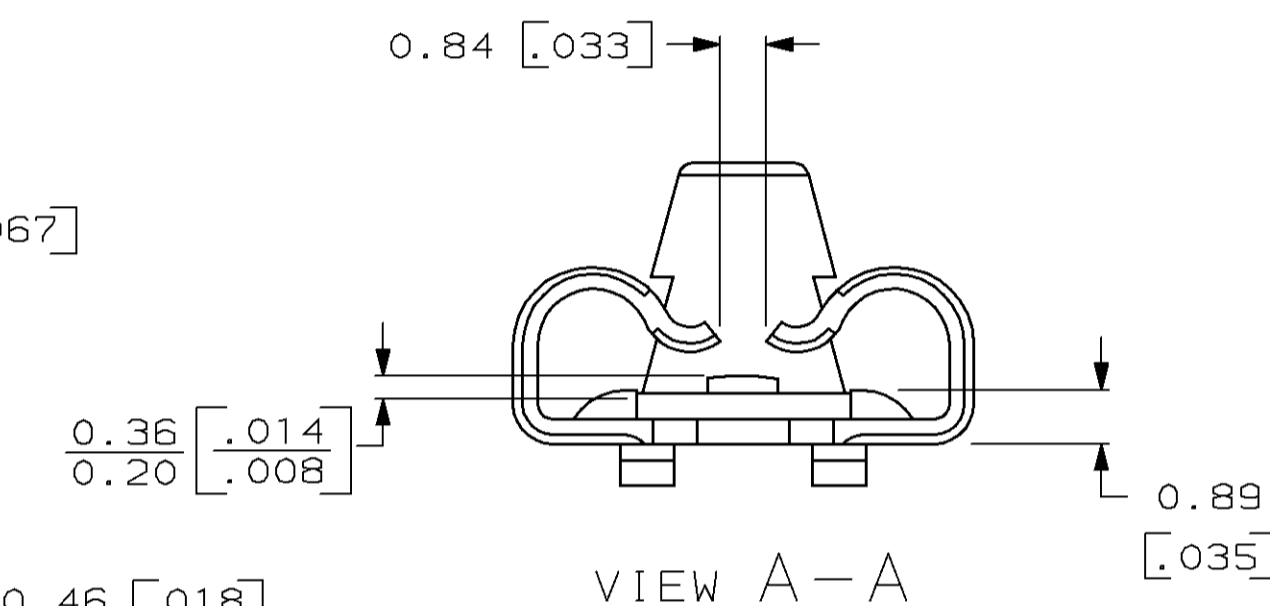


- 1 - MATL: 1/2H BRASS OR NICKEL PL STEEL.
  - 2 - NO BURRS PERMISSIBLE AT HOLE.
  - 3 - MUST BE FLAT WITHIN 0.076 [.003] OVER THIS LENGTH.
  - 4 - TIN PLATING IS REQUIRED ON BRASS WHEN TERMINAL TEMP. IS OVER 225°F.
  - 5 - HOLE MUST BE SYMMETRICAL ABOUT TAB Q WITHIN 0.076 [.003]
- \* TO BE USED ONLY WHEN SHOULDER IS ELIMINATED.

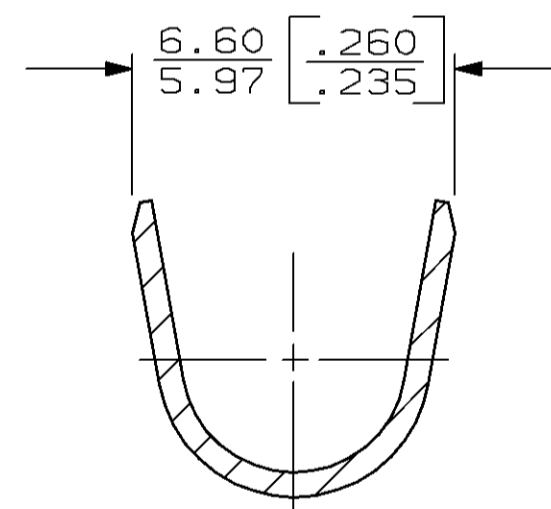


SECTION B-B

- 1 DIMENSIONS IN BRACKETS ARE IN INCHES.
- 2 CONTINUOUS STRIP ON REELS.
- 3 THE 1.40 [.055] / 1.27 [.050] DIMENSION MUST BE MAINTAINED BY THE APPLICATOR CUT-OFF TO ENSURE THE PROPER LOCKING FUNCTION OF THE RECEPTACLE.



VIEW A-A



SECTION C-C

**METRIC**

UNLESS OTHERWISE SPECIFIED DIMENSIONS ARE IN MM TOLERANCES ON :		INSULATION RANGE		WIRE SIZE		PART NO	
2 PL DEC ± -		3.81-5.08 [.150-.200]		3.0-6.0 MM <sup>2</sup> [12-10]		63239-1	
3 PL DEC ± 0.25 [.010]		DR 7/28/86 JR RUTH		AMP INCORPORATED Harrisburg, Pa. 17105			
ANGLES ± -		CHK 1/23/87 G YETTER					
MATERIAL		APPD 1/23/87 J GILLESPIE		NAME			
#4H BRASS		APPD 1/23/87 R KUZO		RECPT, POSITIVE LOCK, .250 SERIES			
FINISH		PRODUCT SPEC		SIZE		DRAWING NO	
TIN		APPLICATION SPEC 114-2074		C 00779		63239	
		WEIGHT		SCALE NTS		SHEET 1 OF 1	